

VIRTUALWISDOM JUMPSTART KIT

As a member of the Virtual Instruments' VirtualWisdom solutions family, the Jumpstart Kit is designed to provide all of the features and benefits of VirtualWisdom and SANInsight-based instrumentation, monitoring, and measurement in an entry-level, standard deployment configuration. It enables software monitoring of up to 192 switch ports, and 24 storage ports at a 12:1 roving ratio.

VirtualWisdom products and services provide comprehensive, real-time instrumentation and measurement that allow IT managers to optimize the performance, utilization, and availability of their SAN (Storage Area Network) infrastructure. Strong I/O performance is the most critical component of superior application performance. The key to achieving strong I/O performance is deploying instrumentation technology that directly measures what is going on at a deep level in the transaction workflow, from the host to storage array.

For SAN managers, VirtualWisdom provides comprehensive instrumentation and SAN I/O measurement capabilities that reduce application response time, increase availability, and improve resource utilization. VirtualWisdom is the only product that can non-intrusively improve the performance of applications and increase the benefits of storage virtualization in real time by analyzing actual SAN I/O traffic data.

VIRTUALWISDOM JUMPSTART KIT COMPONENTS

VirtualWisdom ProbeV

ProbeV is a virtual software probe that collects status from SAN switches via SNMP. ProbeVs collect metrics for each port, and these metrics are generated and reported to the VirtualWisdom Portal Server by each ProbeV. Each ProbeV monitors all ports of a particular fibre-channel switch and collects the metrics for each port, such as the number of frames and bytes transmitted, as well as the key faults for each port, such as loss of synchronization, link resets, link failures, packet discards, and CRC errors.

VirtualWisdom Portal Server

VirtualWisdom Portal Server software resides on your Windows server platform, controlling and collecting metrics from probes. It manages the database of metrics, handles integration with third party products via SNMP traps, and handles alerting. The VirtualWisdom Portal Server co-resides with the ProbeV software.

VirtualWisdom Dashboard and Views

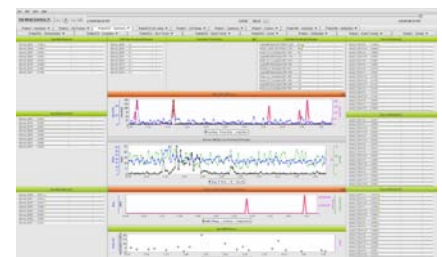
VirtualWisdom Dashboard software is a real-time summary display that provides an overview of the virtual and physical infrastructure performance and faults, based on the metrics available from the probes. It displays the key activity related to servers and storage including measurements for percent utilization, reads, writes, events, alarms, as well as signal and error status on the probe channels. VirtualWisdom Views software allows users to access the VirtualWisdom SAN metrics and alerts from their workstations in the form of reports, graphs, and tables, in either real-time or via historical trends.

Jumpstart Kit Features

- Dedicated, real-time hardware and software-based SAN monitoring solution with flexible thresholds and alerts, in a standard easy-to-deploy configuration
- Project management, planning, logistics, remote preparation, and up to four days onsite installation assistance for basic configuration and transfer of knowledge for basic measurement and analysis of data
- Seamless upgrade available to additional SANInsight Probes and Rovers

Jumpstart Kit Benefits

- Achieve the full CapEx and OpEx benefits of a VirtualWisdom-based platform for faster troubleshooting, optimized application performance, reduced outages, improved SAN utilization, more effective storage tiering, effective monitoring of SLAs, and accelerated application deployments



SANInsight™ ProbeFCX

Fibre-Channel probes (ProbeFCXs) analyze every frame header on a fibre-channel SAN at line rates up to 4 Gbits per second. ProbeFCX probes detect application performance slowdowns and transmission errors by measuring every SCSI I/O transaction in real-time from start to finish, for every server/volume combination (initiator/target/ LUN).



SANInsight™ TAP Patch Panel System

Traffic Access Points (TAPs) provide a passive, fail-safe access point to fibre-channel network traffic on a SAN for failure analysis, problem diagnosis, and performance monitoring. TAPs operate “out-of-band” by transparently diverting a portion of the signal through the TAP to another port, which provides a copy of the Fibre Channel frame headers. The agent-less TAP has no impact on application or SAN performance.



SANInsight™ Rover

The Rover physical layer switch extends the monitoring reach of each ProbeFCX probe to groups of SAN links. ProbeFCX probes and protocol analyzers can be attached to Rover physical layer switches and access any of the connected SAN links. Rovers provide a way to deploy a tiered monitoring architecture to lower the cost of monitoring and extend the investment in VirtualWisdom.



VirtualWisdom QuickStart Installation & Training Service

QuickStart Service is designed to jumpstart the deployment of Virtual Instruments' VirtualWisdom software and SANInsight hardware products such as Traffic Access Points (TAPs), SAN monitoring probes (ProbeFCX), and Rovers. These services combine on-site training, deployment and baseline assessment services to help ensure a successful initial VirtualWisdom deployment.

VIRTUALWISDOM JUMPSTART KIT

Product Code	Description
MK-SSM	Jumpstart Kit. Enables software monitoring of up to 192 switch ports, and 24 storage ports at a 12:1 roving ratio. Includes the following: VW Server - Limited VirtualWisdom Server – Departmental License VW ProbeV-192 VirtualWisdom ProbeV license for 192 switch ports E-2 ProbeFCX SANInsight 2 link Fibre Channel Probe, 1/2/4 Gbps VW Key 002-ML VirtualWisdom ProbeFCX License, 2 Monitored Links E-72 Rover Chassis 3 slot SANInsight Rover chassis for up to 72 links E-24 Rover MM Blade 24 link SANInsight Rover MM Blade VW Key 024-RL VirtualWisdom Rover License for 24 links TPP-024B57-OL 1U 24 link TAP Patch Panel, 50um OM3 MM, all LC adapters PC-500LCLC05-024 Qty 24 Patch Cables, MM 50um OM3, LC-LC, 5 meters TR-VWQS-V VirtualWisdom Basic QuickStart Installation and Training service for ProbeV and ProbeFCX. Includes planning, logistics, remote preparation, 3 days onsite service 24x7 Support One year of 24x7 maintenance and support services on hardware and software



100 Enterprise Way, Suite C-3
Scotts Valley, CA 95066
Phone: 831-439-4000

Sales Information
sales@virtualinstruments.com
Phone: 831-439-4080

Customer Support
support@virtualinstruments.com
www.virtualinstruments.com